

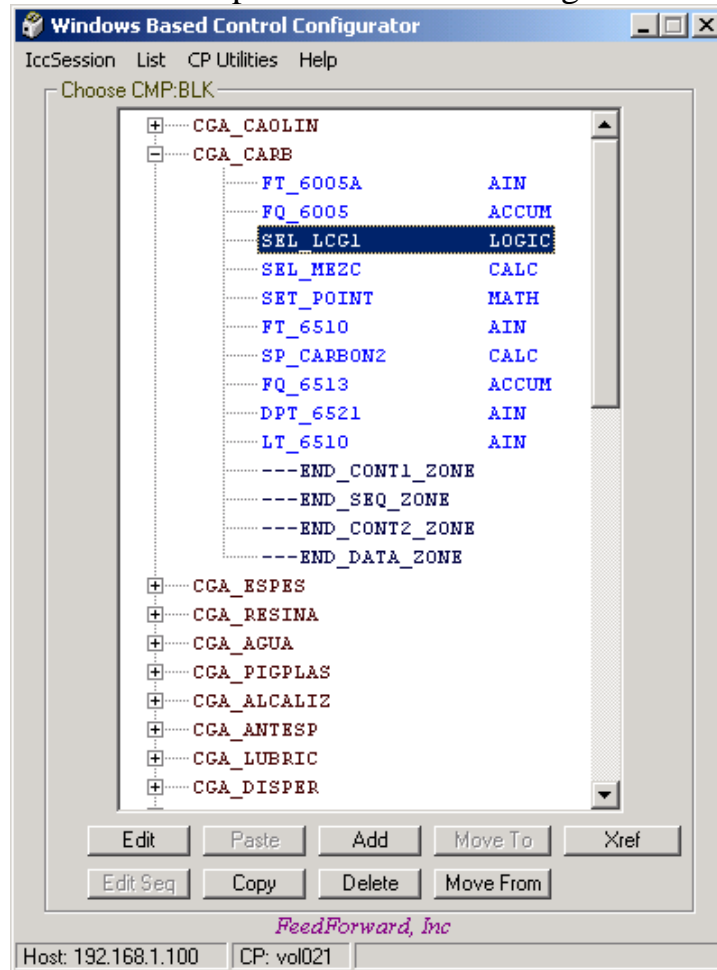
Remote Control Configurator

Features:

1. ***Remote ICC Access***: provides ICC Functions from a networked, Windows-based PC, without using X-Windows emulation software (like Exceed). The implementation is basically a client/server setup, and is essentially a Visual-Basic GUI for the ICCAPI. This also works very well with WP70/AW51x hybrid systems.
2. ***Windows Look and Feel***: provides familiar Windows “Look and Feel,” such as copy and paste functionality for parameter entry, and Tree-Views for Compound-Block browsing.
3. ***Multiple Simultaneous ICC Sessions***: allows more than one ICC session per AW/AP host, unlike the standard ICC, which only allows one session per host. There can be as many open sessions as the number of CPs on the system.
4. ***Cross-Referencing***: provides Cross-Referencing abilities. Any Foxboro block can be cross-referenced to show all other blocks, displays, and historians that are connected to it, even while editing the block (This is not available on standard Foxboro ICC.)
5. ***ICC Functions Supported***:
 - A. Block Parameter Edits
 - B. Add/Delete Blocks and Compounds
 - C. Move blocks and compounds
 - D. Copy/Paste (duplicate) Blocks
 - E. Sequence Code Editing/Compiling
 - F. Upload, Initialize, and Checkpoint CP

Program Snapshots:

Compound/Block Browsing



Block Editing

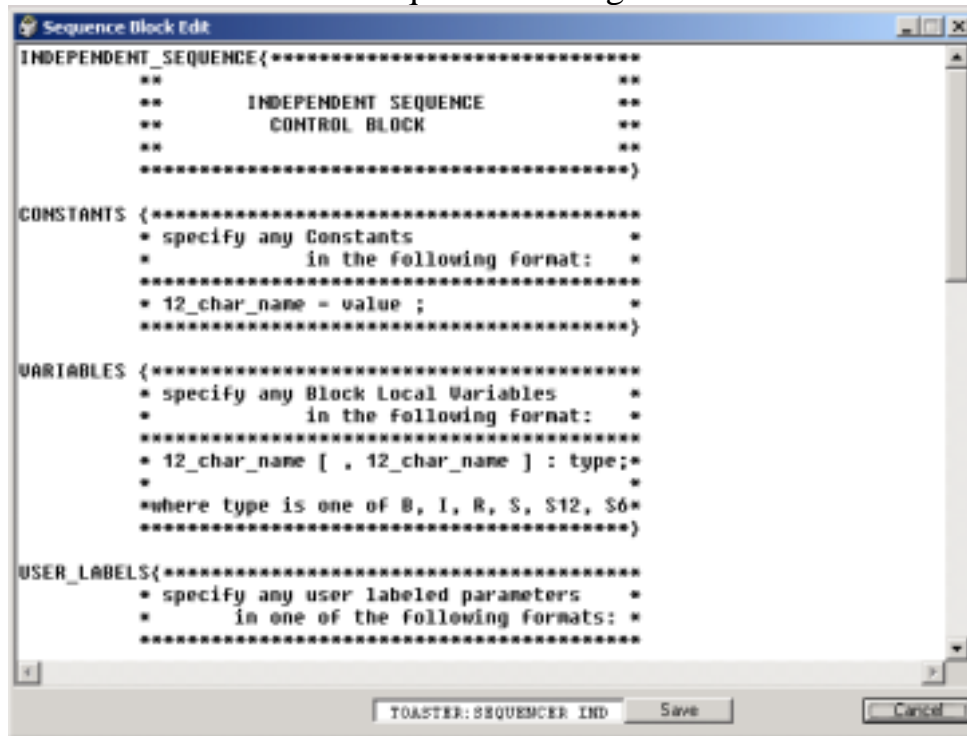
Parameter	Orig Value	New Value
TYPE	CALC	
DESCRP	CONVERT F0130B2 SEC TO MIN	
PERIOD	3	
PHASE	0	
LOOPID		
PI01	:F0130B2.TIMDIV	
HSCI1	100000.	
LSCI1	0.0	10.0
DELTI1	1.0	
SI1	SEC	MIN
PI02	0.0	:LT321.MEAS
HSCI2	100.0	
LSCI2	0.0	
DELTI2	1.0	
SI2	%	
PI03	0.0	
HSCI3	100.0	
LSCI3	0.0	
DELTI3	1.0	
SI3	%	
PI04	0.0	
HSCI4	100.0	
LSCI4	0.0	
DELTI4	1.0	
SI4	%	
PI05	0.0	
HSCI5	100.0	
LSCI5	0.0	
DELTI5	1.0	
SI5	%	
PI06	0.0	

OK Cancel HSCI2 100.0

Cross-Reference Listing for Block

Parameter	Value
15TXCP:TIC_5206.MEAS	/usr/disp/Toaster1
15TXCP:TIC_5206.OUT	/usr/disp/Toaster1
15TXCP:TIC_5206.OUT	15TXCP:TIC_5206.FBK
15TXCP:TIC_5206.OUT	15TXCP:TY_5206.MEAS
15TXCP:TIC_5206.PRTYPE	/usr/disp/Toaster1
15TXCP:TIC_5206.UNACK	/usr/disp/Toaster1

Sequence Editing



Possible Future Enhancements:

1. PLB Editing/Compiling.
2. Allow more than one simultaneous ICC session per CP, so more than one user can be editing a CP (as long as they are not editing the same Block)
3. Track Control Changes
4. Change the GUI from the standard Windows GUI to HTML, ActiveX, or Java, so that the user does not need any special client software (they can use a standard browser).